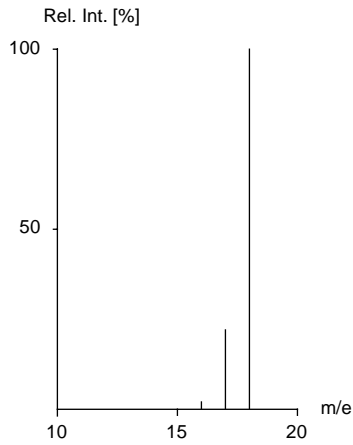


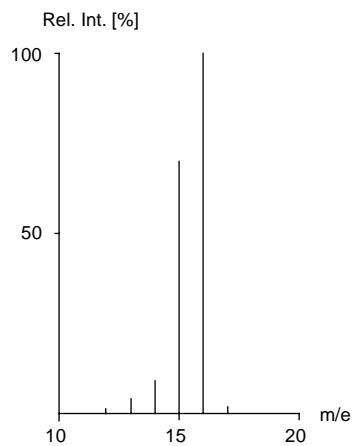
PdW 1 Musterlösung

H₂O



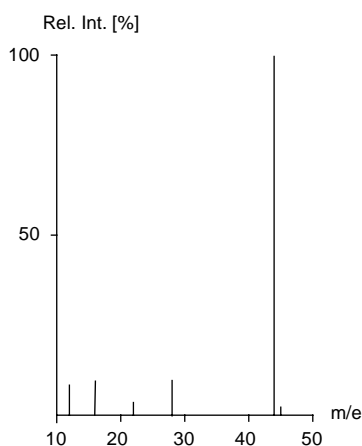
	m/e	Rel. Int.
¹ H ⁺	1	0,1
¹⁶ O ²⁺	16	1,0
¹⁷ O ⁺ ¹⁶ O ¹ H ⁺	17	21,0
¹⁸ O ⁺ ¹⁷ O ¹ H ⁺ ¹ H ₂ ¹⁶ O ⁺	18	100,0
¹⁸ O ¹ H ⁺ ¹ H ² ¹⁶ O ⁺ ¹ H ₂ ¹⁷ O ⁺	19	0,07
¹⁸ O ² H ⁺ ¹ H ² ¹⁷ O ⁺ ¹ H ₂ ¹⁸ O ⁺	20	0,22

CH₄



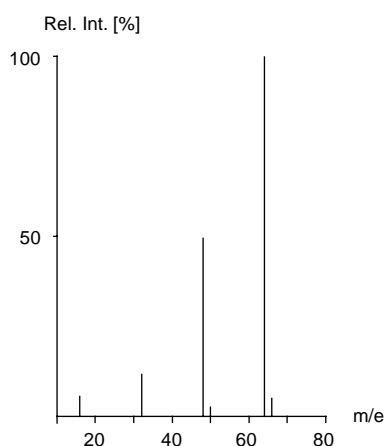
	m/e	Rel. Int.
¹ H ⁺	1	3,1
² H ⁺ ¹ H ₂ ⁺	2	0,17
¹² C ⁺	12	1,0
¹³ C ⁺ ¹² C ¹ H ⁺	13	3,9
¹² C ² H ⁺ ¹³ C ¹ H ⁺ ¹² C ¹ H ₂ ⁺	14	9,2
¹² C ² H ¹ H ⁺ ¹³ C ¹ H ₂ ⁺ ¹² C ¹ H ₃ ⁺	15	85,0
¹² C ² H ¹ H ₂ ⁺ ¹³ C ¹ H ₃ ⁺ ¹² C ¹ H ₄ ⁺	16	100,0
¹² C ² H ¹ H ₃ ⁺ ¹³ C ¹ H ₄ ⁺	17	1,11
¹² C ² H ₂ ¹ H ₂ ⁺ ¹³ C ² H ¹ H ₃ ⁺	18	0,01

CO₂



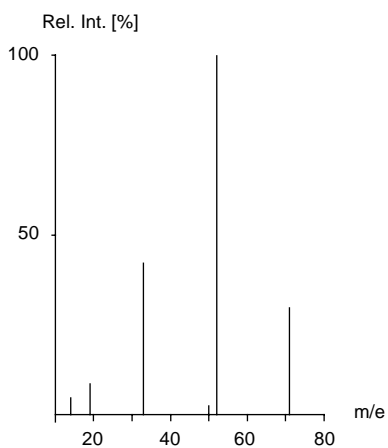
	m/e	Rel. Int.
¹² C ⁺	12	8,7
¹⁶ O ⁺	16	9,6
¹² C ¹⁶ O ₂ ⁺⁺	22	1,9
¹² C ¹⁶ O ⁺	28	9,8
¹² C ¹⁷ O ⁺	29	0,13
¹³ C ¹⁷ O ⁺	30	0,02
¹² C ¹⁶ O ₂ ⁺	44	100,0
¹² C ¹⁶ O ¹⁷ O ⁺	45	1,2
¹³ C ¹⁶ O ¹⁷ O ⁺	46	0,42

SO₂



	m/e	Rel. Int.
¹⁶ O ⁺	16	5,2
³² S ¹⁶ O ⁺⁺	24	0,8
³² S ¹⁷ O ⁺⁺	24,5	0,01
³² S ¹⁸ O ⁺⁺	25	0,04
¹⁶ O ₂ ⁺	32	11,0
¹⁶ O ¹⁷ O ⁺	33	0,10
¹⁶ O ¹⁸ O ⁺	34	0,42
³² S ¹⁶ O ⁺	48	49,0
³² S ¹⁷ O ⁺	49	0,41
³² S ¹⁸ O ⁺	50	2,3
³² S ¹⁶ O ₂ ⁺	64	100,0
³² S ¹⁶ O ¹⁷ O ⁺	65	0,88
³² S ¹⁶ O ¹⁸ O ⁺	66	4,9
³³ S ¹⁶ O ¹⁸ O ⁺	67	0,01

NF₃



	m/e	Rel. Int.
¹⁴ N ⁺	14	5,2
¹⁵ N ⁺	15	0,02
¹⁹ F ⁺	19	8,4
¹⁴ N ¹⁹ F ⁺	33	42,0
¹⁵ N ¹⁹ F ⁺	34	0,15
¹⁴ N ¹⁹ F ₂ ⁺	52	100,0
¹⁵ N ¹⁹ F ₂ ⁺	53	0,39
¹⁴ N ¹⁹ F ₃ ⁺	71	30,0
¹⁵ N ¹⁹ F ₃ ⁺	72	0,11